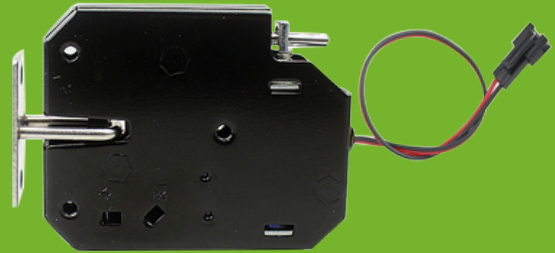


Small Locking Cabinet
12V 1.8A Cabinet Lock



CB-96

Specifications

Fail-secure type		Power	24.0W
S4A Model No.	CB-96	Insulation Class	B
Voltage	DC12V 1.8A	Finish	Cataphoresis(or OEM)
Signal Output	No	Working Temperature	-5 C ~55 C
Lock size	73 x 58 x 13.3mm	Working life	1 million times(10%energized)
Resistance	6	Warranty	1 Year

Dimensions

